



## LED Lighting Surge Protector Datasheet

### ZYS-P20W

### SPECIFICATION FOR APPROVAL

Supplier Name : Shenzhen Zhongyuan Technology Co., Ltd.

Supplier Part Number : ZYS-P20W

Supplier Material Code : 101-121206701

Supplier Warranty : Five Years Warranty

Packaging Method : 20PCS/Box ,16Box/CTN ,320PCS/CTN

Special Requirements : \_\_\_\_\_

#### Product Parameters :

Input Voltage	Lightning Protection	IP Rating	Connection Mode	Certificate
100-277Vac	L-N:20KV L/N-PE:20KV	IP67	Parallel Connection	CE

Please send back a letter of acknowledgement to our company after sign and stamp.

Customer sign and stamp		Supplier sign and stamp	
Fiction		Admit	
Inspect		Inspect	
Approval		Approval	



# LED Lighting Surge Protector Datasheet

## ZYS-P20W



### Agency Approvals

Agency	Standard	Agency File Number
CE		

### Parameters

Part Number	ZYS-P20W
Rated working voltage/Un ( VAC )	100-277V
Maximum continuous working voltage/MCOV/Uc ( VAC ) 1	320V
Rated load current/IL(A)	8A
Nominal discharge current/In(kA)2	10KA
Maximum Discharge Current/Imax ( kA ) 3	20KA
Surge Impulse Voltage/Uoc ( KV )	20KV
Voltage Protection Level/Up(V)4	L-N≤1.8KV,L-G/PE,N-G/PE≤2.8KV
Power Supply System	TN
Waterproof grade	IP67
Work environment	-40℃~+85℃
IEC 61643-11 test classification	Type 2 and Type 3

### Overview

ZYS-P20W series surge protector is a transient over-voltage protection device specially used for outdoor LED lighting system. It is mainly composed of thermal protection varistor and gas discharge tube device. It can be installed in LED lamp or perpetual lamp and connected with LED power driver to provide reliable surge protection. It can effectively prolong the service life of lamps and improve the stability of lamps and lanterns. The protection device must be metal oxide varistor type MOV (Metal Oxide Varistor).

### Features

- ◆ Applicable to class I or II lamps
- ◆ Built in protection mode: L-N, L-PE, N-PE
- ◆ Built in thermal separation function for higher security
- ◆ Parallel isolation design, excellent protection performance
- ◆ Excellent surge resistance and very low residual voltage
- ◆ CCC 1\*1.0mm<sup>2</sup> electronic wire
- ◆ Small and convenient for embedded installation
- ◆ IP67 dust proof and waterproof grade

### Application

- ◆ Digital Signage
- ◆ Traffic Lighting
- ◆ Flood Lighting
- ◆ Tunnel Lighting
- ◆ Street lighting
- ◆ Wall Lamp
- ◆ Road Lighting
- ◆ Parking Lighting
- ◆ AC-LED Lighting



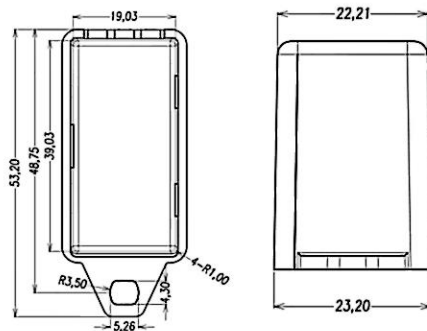
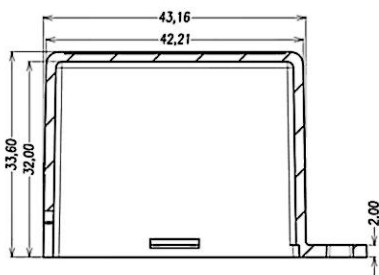
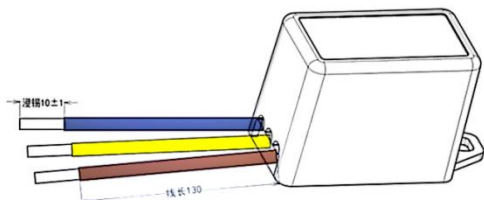
# LED Lighting Surge Protector Datasheet

## ZYS-P20W

### Notes:

- 1 Maximum continuous working voltage MCOV/UC(VAC): The maximum continuous working voltage continuously applied to the SPD line end
- 2 Nominal discharge current ( $I_n$ ) (kA): The measured value of SPD withstand capability; the measured value of 15 pulses using 8/20us current waveform.
- 3 Maximum discharge current (max) (kA): The maximum discharge current is the measured value of the SPD's maximum withstand capability, and the measured value of 2 pulses using 8/20us current waveform
- 4 Voltage protection level/Up: IEC61643-11 voltage protection level, the maximum residual voltage measured value of the nominal discharge current ( $I_n$ ) under continuous application of 8/20u pulses, is the maximum voltage measured value after one round

### Dimension



### Diagram

